

Introducing the *IPRC Climate Newsletter*

This first issue of *IPRC Climate* introduces the newsletter of the International Pacific Research Center (IPRC) at the School of Ocean and Earth Science and Technology (SOEST), University of Hawai‘i at Mānoa. The center’s mission is “to provide an international, state-of-the art research environment to improve understanding of the nature and predictability of climate variability in the Asia-Pacific sector, including regional aspects of global environmental change.” Founded in October 1997, under the U.S.-Japan Common Agenda for Cooperation in Global Perspective, the IPRC is a collaborative effort between Japan and the United States.

IPRC Climate will report ongoing research at the IPRC as well as summaries of IPRC-sponsored workshops and events. Our goal is to inform fellow climate researchers and the general public of IPRC activities. We welcome comments on our articles, which readers can send directly to authors (whose email addresses can be found at the IPRC website, <http://iprc.soest.hawaii.edu>) or to the editor, Gisela Speidel (speidel@soest.hawaii.edu).

Julian P. McCreary, Jr.
Director
International Pacific Research Center

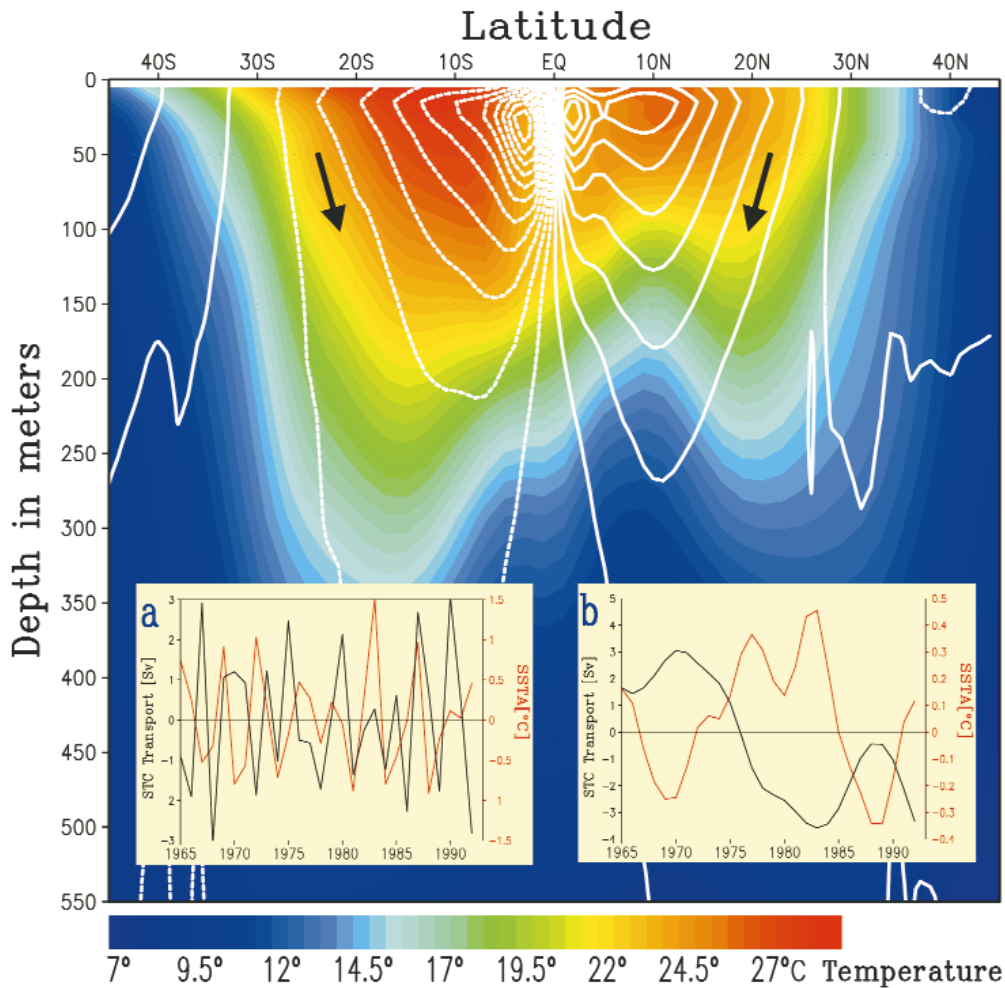


Figure 1. Central Pacific meridional section of ocean temperature (color) and zonally averaged meridional streamfunction (white contours). Sea surface temperature and Subtropical Cell anomalies at interannual (panel a) and decadal (panel b) timescales.