



# The International Coastal Cleanup



**In 29 years more than 10.8  
million volunteers picked up  
188.5 million pounds of trash  
from 350,000 miles of shoreline  
in all 50 states and 153  
countries.**



# International Coastal Cleanup International & National Sponsors

The Ocean Conservancy  
The Coca-Cola Company  
Bank of America  
Cox Enterprises  
Altria Group, Inc.  
NOAA  
The Dow Chemical Co.  
Glad

# International Coastal Cleanup International & National Sponsors (cont)

Landshark Lager  
Hollomon Price Foudation  
CVS Health  
ITW  
Johnson & Johnson  
Keep America Beautiful  
UN Environment Programme  
US Department of State  
US EPA



# ICC Hawaiian Style





A scenic view of a beach with waves crashing onto the shore, with mountains in the background. The text is overlaid on the image.

# Hawai'i's “Get The Drift & Bag It!”



# Hawaii's Get The Drift & Bag It Local Sponsors

Keep The Hawaiian Islands Beautiful  
Friends of Honolulu Parks &  
Recreation

City & County of Honolulu  
County of Hawaii Parks & Recreation-  
Aquatics

Hawai'i Coastal Zone Management  
Program

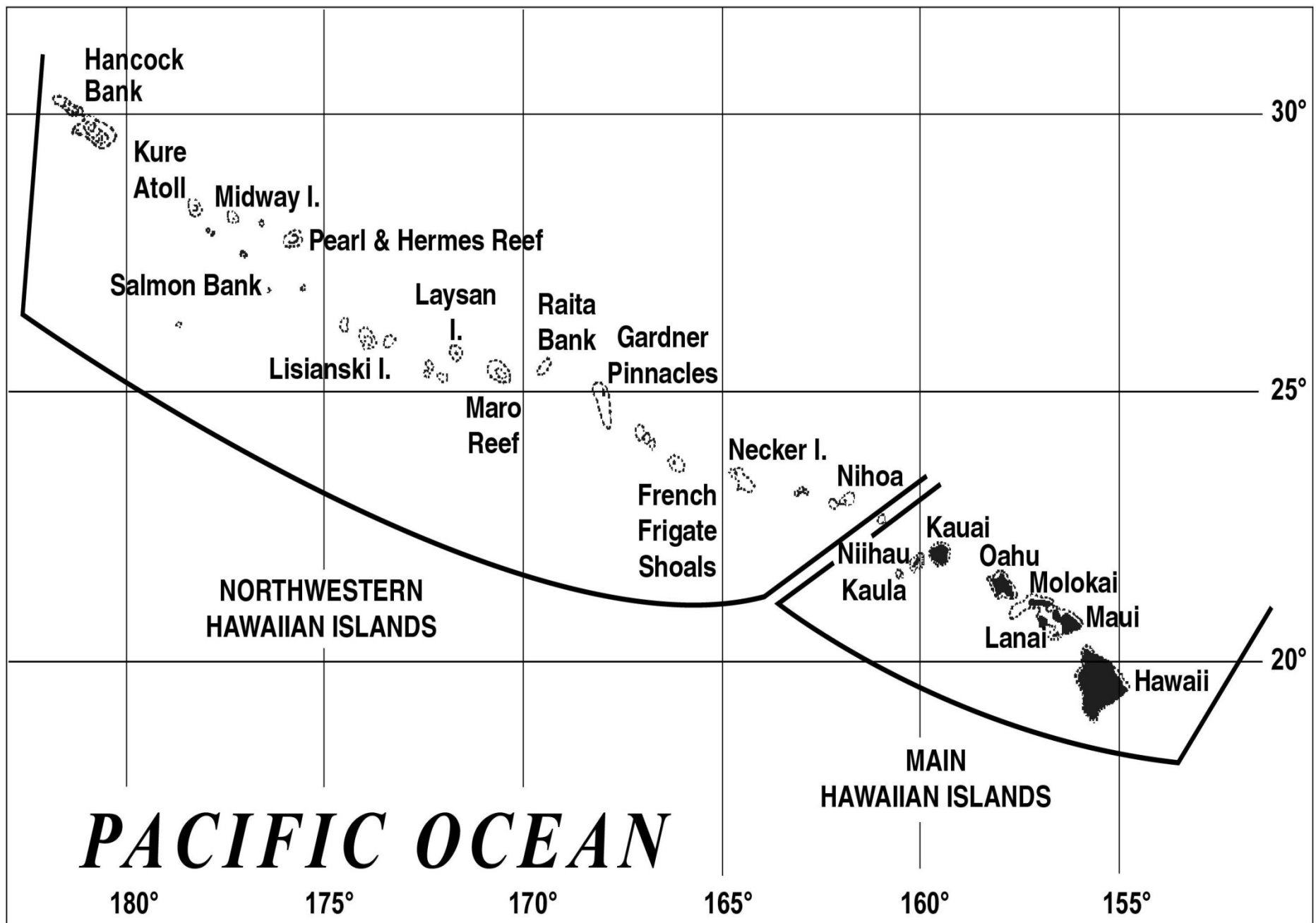
Alexander & Baldwin Foundation  
Clean Islands Council

# Hawaii's Get The Drift & Bag It

## Local Sponsors

- Keep Honolulu Beautiful
- Malama Maui Nui
- Nani'O Waianae
- Matson Navigation
- Waikiki & Hawaii Yacht Clubs
- Na Ali'i Water Ski Club
- Keep Kalaupapa Beautiful
- Keep Kauai Beautiful
- Hawaii Ocean Safety Team
- NOAA
- Hawai'i State Parks
- Hawai'i Department of Boating & Ocean Recreation







**Why do we do coastal and  
waterway Cleanups anyway? . .**





**No One Country, Government,  
NGO, Community can do it alone**

## **Before & After Cleanups**















ADOPT A BEACH adopt











# Hawai'i State Top Ten Items 1988-2007

Total

Cigarettes/Cigarette Filters

1,125,223

Caps, Lids

315,624

Cups, Plates, Forks, Knives, Spoons

304,260

Bags

262,025

Food Wrappers/Containers

242,351

Glass Beverage Bottles

225,417

Beverage Cans

165,294

Straws, Stirrers

110,784

Plastic Beverage Bottles

106,299

Fishing Line

75,077

# Hawai'i State Top Ten Items 2008

% Total

Cigarettes/Cigarette Filters	68,115	47.51
Caps, Lids	15,919	11.10
Food Wrappers/Containers	11,376	7.93
Plastic Bags	7,782	5.43
Rope	4,278	2.98
Glass Beverage Bottles	4,203	2.93
Cups, Plates, Forks, Knives, Spoons3820	3,820	2.66
Fishing Line	3,167	2.21
Paper Bags	2,472	1.73
Straws, Stirrers	2,337	1.63

86.12%



# Hawaii State Top Ten Items 2013

Item	Total	Total %
Cigarette Butts	42767	37.77%
Food Wrappers (candy, chips, etc.)	9926	8.77%
Bottle Caps (Plastic)	9463	8.36%
Bottle Caps (Metal)	9122	8.06%
Fishing Net & Pieces	3569	3.15%
Beverage Bottles (Plastic)	2913	2.57%
Straws, Stirrers	2795	2.47%
Other Plastic/Foam Packaging	2679	2.37%
Fishing Buoys, Pots & Traps	2439	2.15%
Other Plastic Bags	2371	2.09%
<b>Top Ten Total</b>	<b>88044</b>	<b>77.75%</b>

## REPORT ADDENDUM: Tiny Trash

Plastic Pieces	56750	75.71%
Glass Pieces	12876	17.18%
Foam Pieces	5333	7.11%

# Hawaii State Top Ten Items 2014

Item	Total	Total %
Cigarette Butts	43017	32.30%
Bottle Caps (Plastic)	11772	8.84%
Food Wrappers (candy, chips, etc.)	10607	7.96%
Bottle Caps (Metal)	8604	6.46%
Fishing Buoys, Pots & Traps	5917	4.44%
Fishing Net & Pieces	5229	3.93%
Beverage Bottles (Plastic)	4117	3.09%
Other Plastic/Foam Packaging	3358	2.52%
Rope (1 yard/meter = 1 piece)	2780	2.09%
Other Plastic Bags	2563	1.92%
<b>Top Ten Total</b>	<b>97964</b>	<b>73.55%</b>

## REPORT ADDENDUM: Tiny Trash

Plastic Pieces	77572	78.00%
Foam Pieces	12260	12.33%
Glass Pieces	9625	9.68%



# Hawaii State Top Ten Items 2015

Item	Total	Total %
Cigarette Butts	28207	30.24%
Food Wrappers (candy, chips, etc.)	8556	9.17%
Bottle Caps (Plastic)	7799	8.36%
Bottle Caps (Metal)	5176	5.55%
Fishing Net & Pieces	4755	5.10%
Beverage Bottles (Plastic)	3943	4.23%
Beverage Cans	2786	2.99%
Other Plastic/Foam Packaging	2663	2.85%
Beverage Bottles (Glass)	2780	2.09%
Lids	2039	2.19%
<b>Top Ten Total</b>	<b>68100</b>	<b>73.00%</b>

## REPORT ADDENDUM: Tiny Trash

Plastic Pieces	20688	26.70%
Glass Pieces	9679	26.70%
Foam Pieces	5886	16.24%
Tiny Trash Total	36253	100.00%

A photograph of a tropical beach scene. The foreground shows a sandy beach with some small, light-colored rocks or shells. The water is a vibrant turquoise color, transitioning to a deeper blue as it meets the horizon. The sky is a dark, moody blue with some lighter, wispy clouds near the horizon. The overall atmosphere is serene and peaceful.


**Communities are empowered . . .**





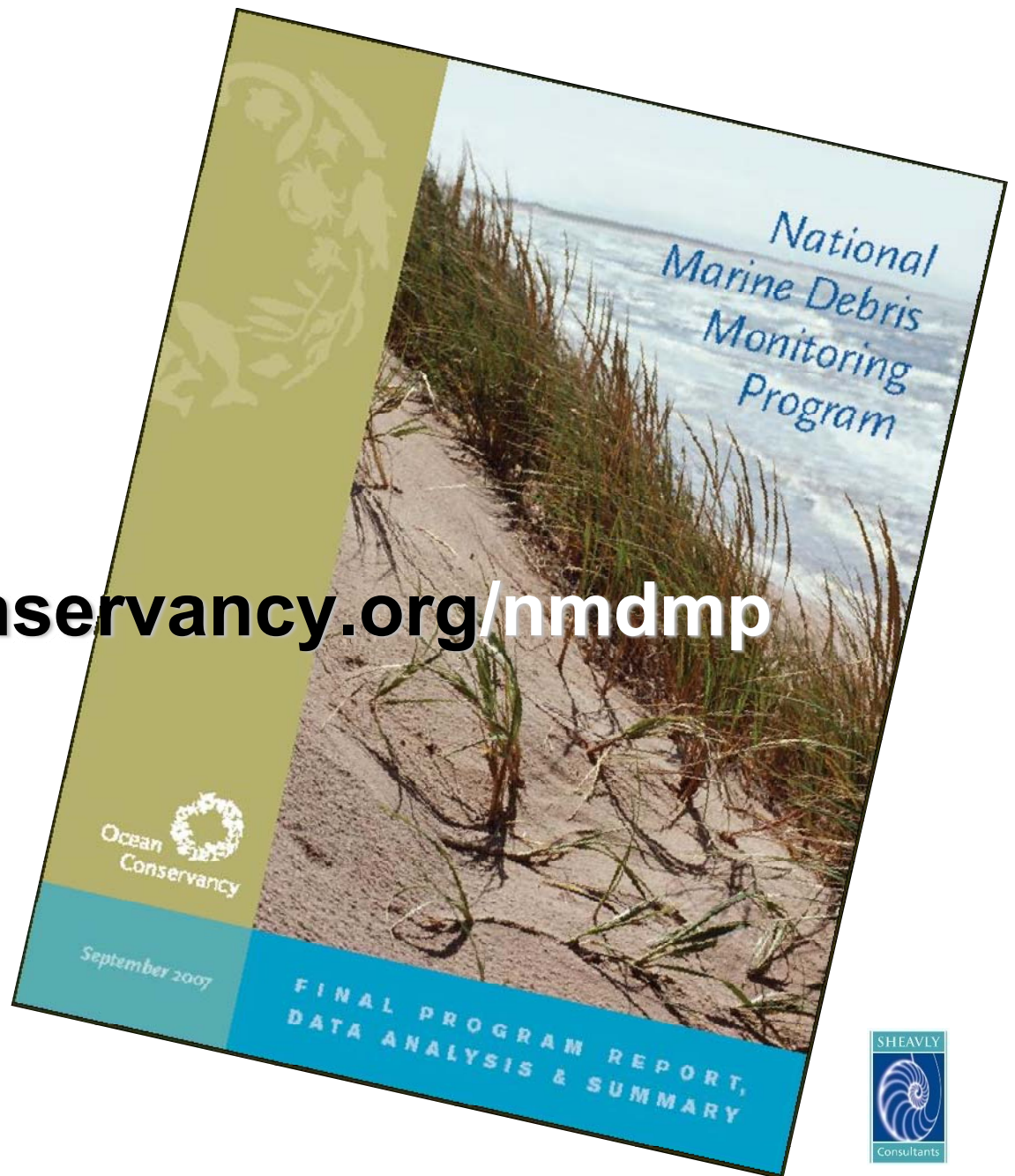




A wide, shallow body of water, possibly a lagoon or bay, with a sandy beach in the foreground. The water is a vibrant turquoise color, and the sky is a deep blue with some white clouds. The text "Research is supported. . ." is overlaid in the center of the image.

**Research is supported. . .**

[www.oceanconservancy.org/nmdmp](http://www.oceanconservancy.org/nmdmp)





# NMDMP Regions

**Region 1** U.S./Canada border  
to Provincetown, MA

**Region 2** South of Cape Cod, MA  
to Beaufort, NC

**Region 3** Morehead City, NC  
to Port Everglades, FL

**Region 4** Port Everglades, FL, Puerto  
Rico, U.S. Virgin Islands  
to Gulf Shores, AL

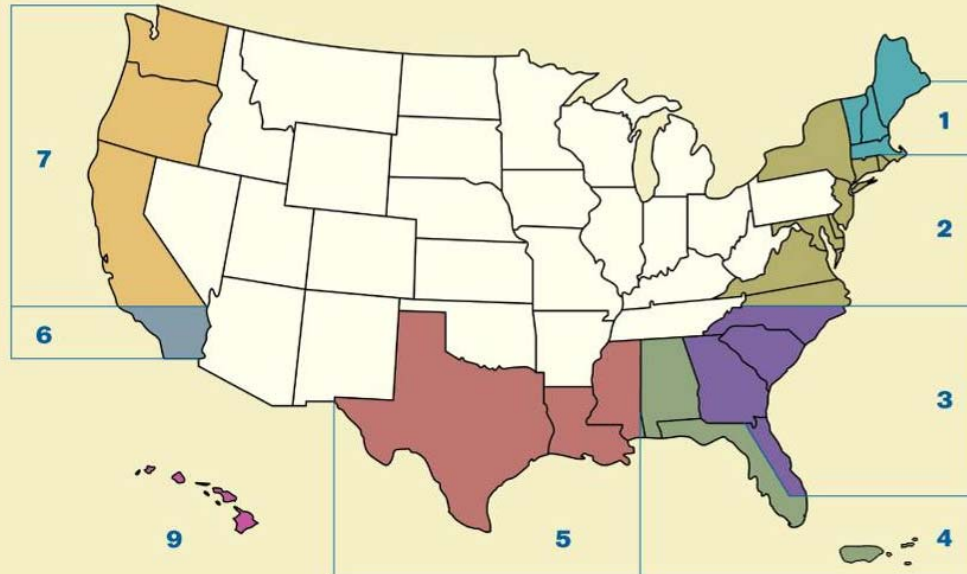
**Region 5** Dauphin Island, AL  
to U.S./Mexico border

**Region 6** U.S./Mexico border  
to Point Conception, CA

**Region 7** North of Point Conception, CA  
to U.S./Canada border

**Region 8** Alaska (southern coast and  
Aleutian Islands)

**Region 9** Hawaiian Islands (main)





# **Midway Atoll – Marine Debris Coastal Monitoring Pilot Project**

## **Papahānaumokuākea Marine National Monument**

↪ ***Midway Atoll***

↪ **Sand & Eastern Islands**



# Grant Project Partners





**Midway is home to over a million  
reasons why marine debris is a  
concern . . . . .**





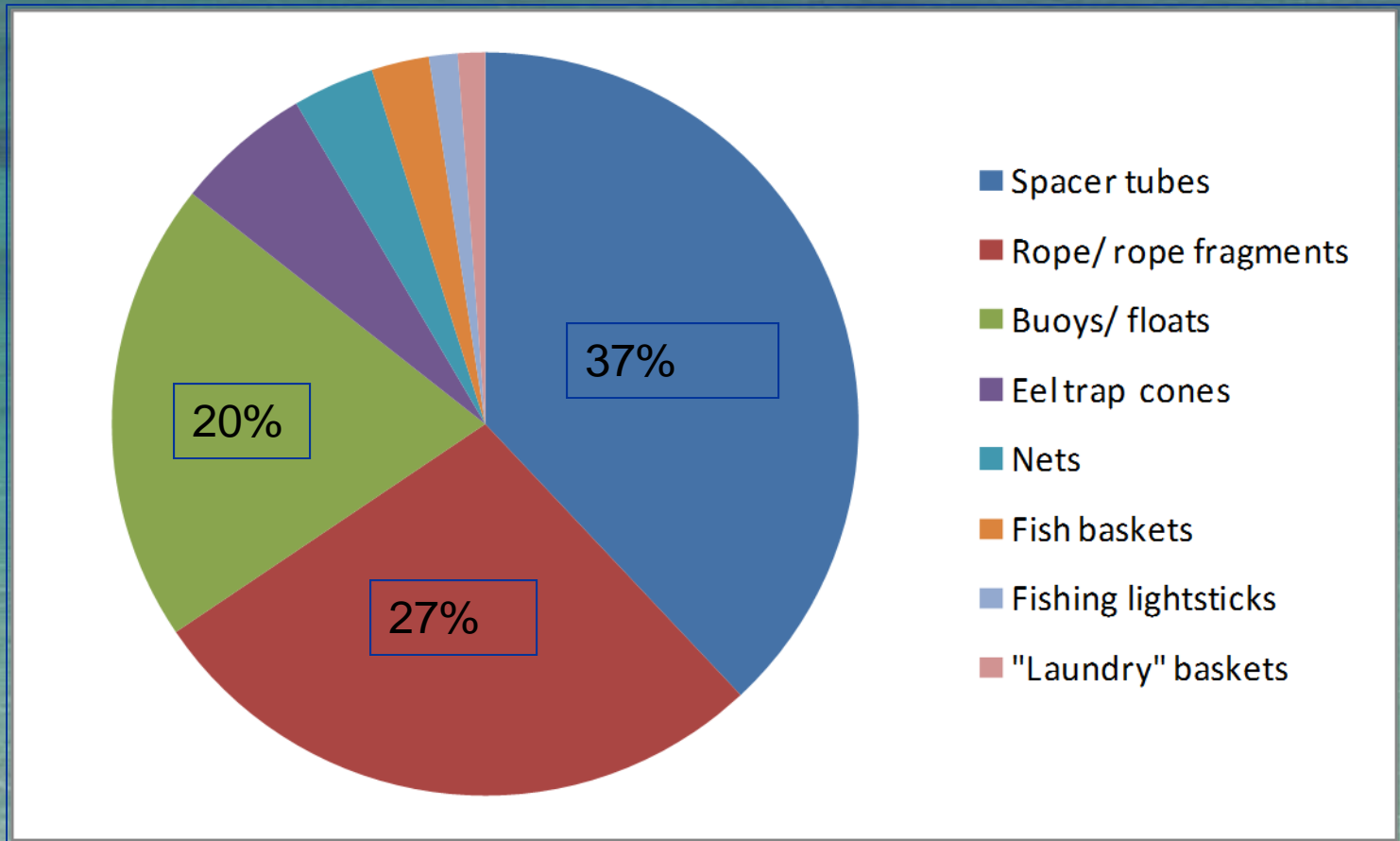






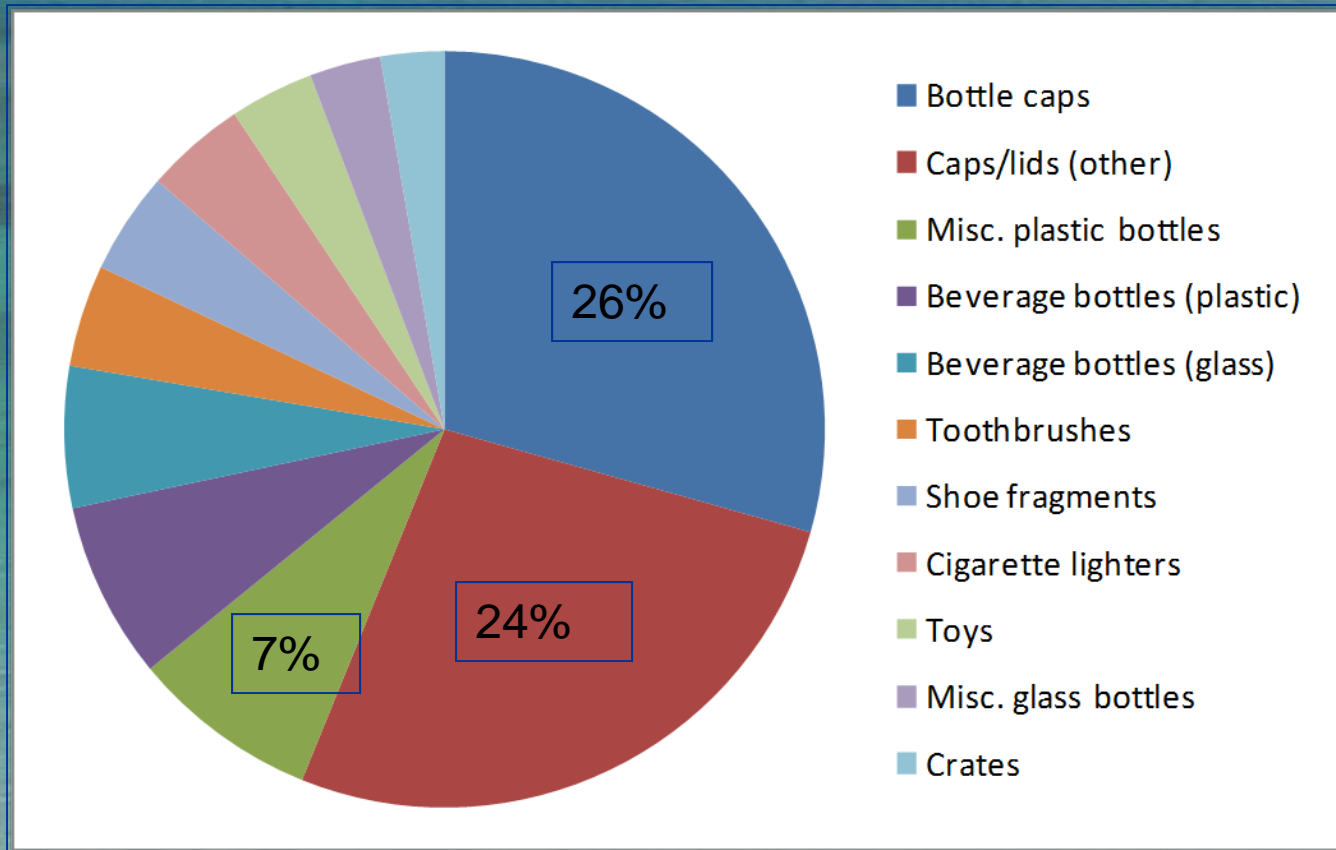
# Fishing-related Items

1,547 items (no pieces) collected



# Land-source Items

2,070 items (no pieces) collected





A wide, shallow body of water, possibly a lagoon or bay, with a sandy beach in the foreground. The water is a vibrant turquoise color, and the sky is a deep blue with some white clouds. The text "Partnerships extend the work. . ." is overlaid in the center of the image.

**Partnerships extend the work. . .**





# **1998 Cooperative Multi-Agency Reef Cleanup: Objectives**

- **Bring non-NMFS agencies into debris mitigation efforts**
- **Develop procedures for expanded cleanup effort**
- **Develop expertise for identification of nets**
- **Establish study sites to assess accumulation rates and impacts**

# NWHI Multi-Agency & Partner Cleanup

- NOAA/NMFS
- US Coast Guard
- NOAA Office of Marine and Aviation Operations
- JIMAR
- USFWS
- U of Hawaii Sea Grant
- U of Alaska Sea Grant
- Victory Fishing Gear
- Schnitzer Steel Hawaii (Hawaii Metals Recycling)
- US Navy
- Covanta Energy
- Japanese Television Workshop
- NOAA/NOS
- City/County of Honolulu
- Hawaii State Department of Land and Natural Resources
- The Ocean Conservancy
- Ocean Futures Society
- Groundfish Forum, Inc.
- Hawaii Department of Business Economic Development & Tourism
- Horizon Waste Services, Inc.



# NWHI Multi-Agency & Partner Cleanup Project Debris Results

**1996/1997 NMFS Pilot Effort: 4 MT**

**1998-2014 Multi-Agency Efforts: 900 MT**







2014/05/21





2014/05/21

20 W: 661359.3  
N: 1853186.3





2014/05/21

20 W: 661359.3  
N: 1853186.3



# Some of Our Best Partners-Our Volunteers

- Give people something they can do
- Give people something they can feel good about
- Publicize the successes





# Mahalo & Aloha

Chris  
Woolaway  
Hawai'i ICC  
State  
Coordinator